

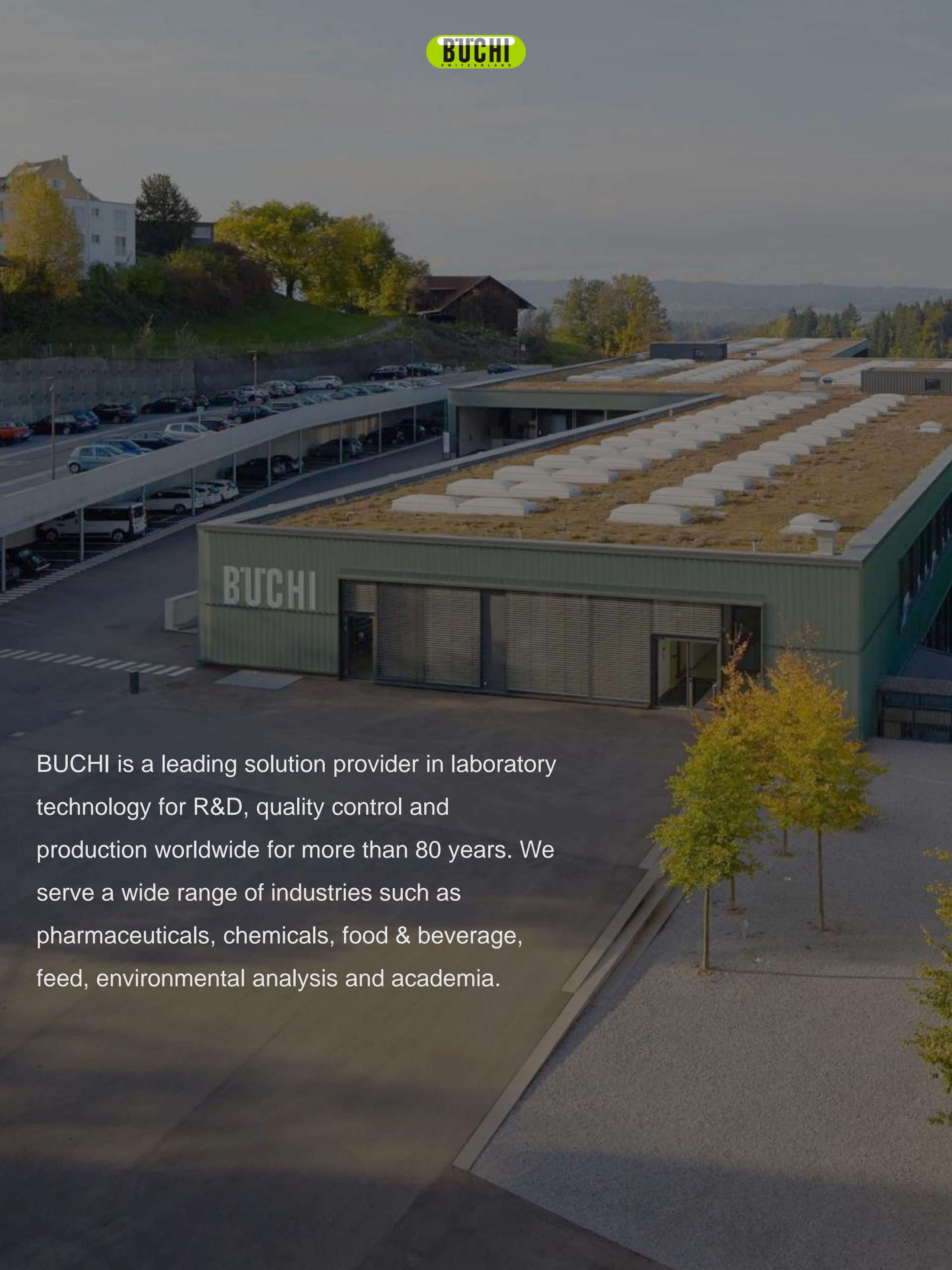
# PT. BUCHI INDONESIA

Affiliate Office of BÜCHI Labortechnik AG - Switzerland in Indonesia



## Product Overview





BUCHI is a leading solution provider in laboratory technology for R&D, quality control and production worldwide for more than 80 years. We serve a wide range of industries such as pharmaceuticals, chemicals, food & beverage, feed, environmental analysis and academia.



R-300

- ✓ Rotary Evaporator R-300 (up to 5L)
- ✓ Vacuum Pump V-300
- ✓ Interface I-300Pro / I-300
- ✓ Recirculating Chiller F-305



R-100

- ✓ Rotary Evaporator R-100 (up to 4L)
- ✓ Vacuum Pump V-100
- ✓ Interface I-100
- ✓ Recirculating Chiller F-100

**Function:**  
For gentle separation/distillation of solvents from samples based on solvent's boiling points



B-585 Drying

- Function:**  
Removal of residual solvents at high temperatures, accelerated by optionally applying vacuum (Drying volume 100-250 ml)



B-585 Kugelrohr

- Function:**  
Fractionated distillation of small amounts of solvents (Drying volume 5-40 ml)

**Market:**  
Pharma, Chemical, Food, Feed, Environmental, Lab Service, Academia



# LABORATORY EVAPORATION



R-220 Pro  
Essential



R-250 Pro



R-220 Pro High  
Performance

- ✓ Rotary Evaporator R-220 (up to 20L) / R-250 (up to 50L)
- ✓ Vacuum Pump V-600 / Sogevac SV40
- ✓ Interface I-300Pro
- ✓ Recirculating Chiller F-325

**Function:**  
For gentle separation/distillation of solvents from samples based on solvent's boiling points

**Market:**  
Pharma, Chemical, Academia





Multivapor



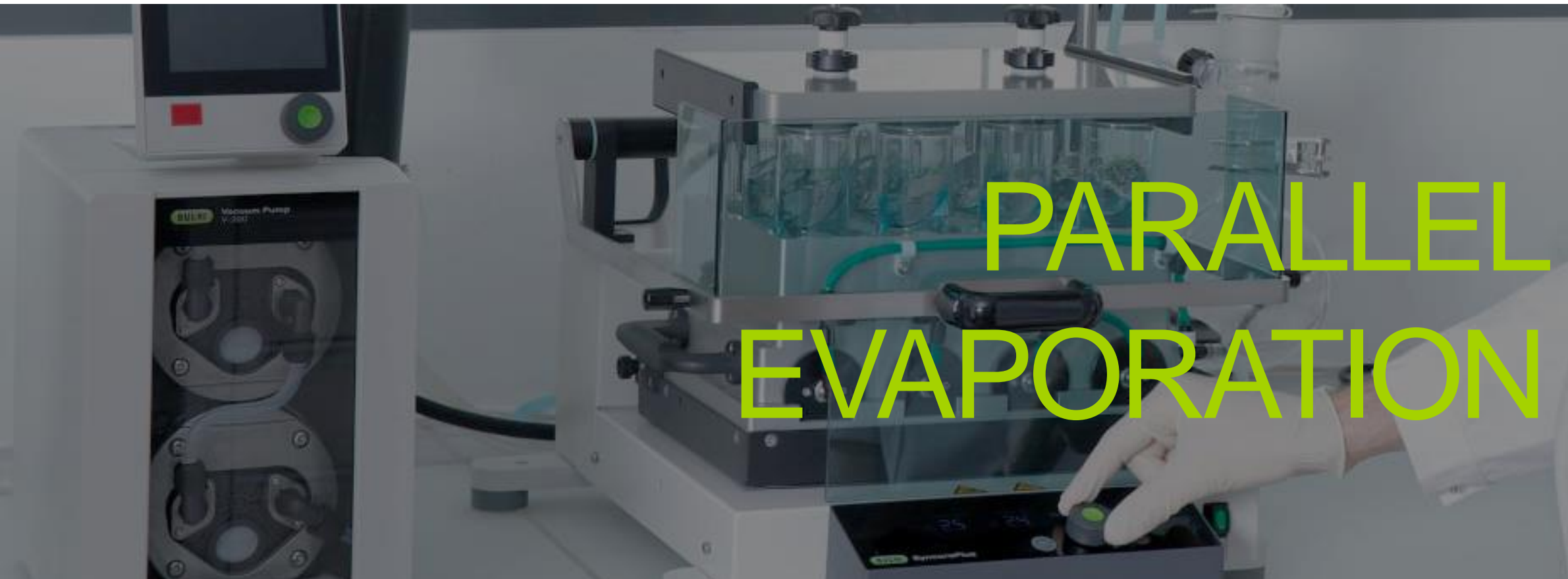
Syncore

- ✓ Multivapor P-6 ( 6 x 150 ml)
- ✓ Multivapor P-12 ( 12 x 30 ml)
- ✓ Sample volume 0,5 – 240 ml
- ✓ Vacuum Pump V-300
- ✓ Interface I-300Pro / I-300
- ✓ Recirculating Chiller F-305

- ✓ Syncore Polyvap (up to 96 samples, 0,5 – 500 ml)
- ✓ Syncore Analyst (up to 12 samples, 5 – 500 ml)
- ✓ Vacuum Pump V-300
- ✓ Interface I-300Pro / I-300
- ✓ Recirculating Chiller F-305

**Function:**  
 For gentle separation/distillation of solvents from multi samples based on solvent's boiling points

**Market:**  
 Pharma, Chemical, Food, Feed, Environmental, Academia





Mini Spray Dryer S-300



Nano Spray Dryer B-90



Encapsulator

- ✓ Mini Spray Dryer S-300 (Particle size 2 – 60  $\mu\text{m}$ )
- ✓ Nano Spray Dryer B-90 ( Particle size 200 nm – 5  $\mu\text{m}$ )
- ✓ Inert Loop S-395
- ✓ Dehumidifier S-396
- ✓ Compressor

- ✓ Encapsulator B-390 for starter encaps
- ✓ Encapsulator B-395 for sterile encaps
- ✓ Particle size 80 – 4000  $\mu\text{m}$

**Function:**

For dry the sample while changing it from solution to powder instantly to micron and nano size

**Function:**

For the immobilization of active ingredients in a polymer matrix

**Market:**

Pharma, Chemical, Food, Feed, Academia

**SPRAY DRYING & ENCAPSULATION**





L-200

L-300

- ✓ Lyovapor™ L-200 Classic/Pro
- ✓ Cooling temperature -55 °C
- ✓ 6 kg sublimation capacity

- ✓ Lyovapor™ L-300 Classic/Pro
- ✓ Cooling temperature -105 °C
- ✓ Infinite sublimation capacity

Drying Chamber

**Function:**  
Preserving a sample by freezing it very quickly and then subjecting it to a vacuum to remove ice by sublimation

**Market:**  
Pharma, Chemical, Food, Feed, Environmental, Academia



# FREEZE DRYING



M-560

- ✓ Manual and fast measurements
- ✓ Determination melting point, boiling point or slip melting point



M-565

- ✓ Automated and reliable measurements
- ✓ Determination melting point, boiling point or slip melting point

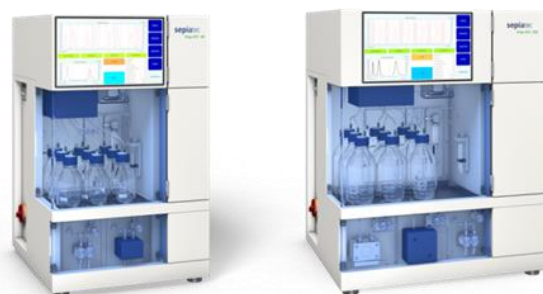
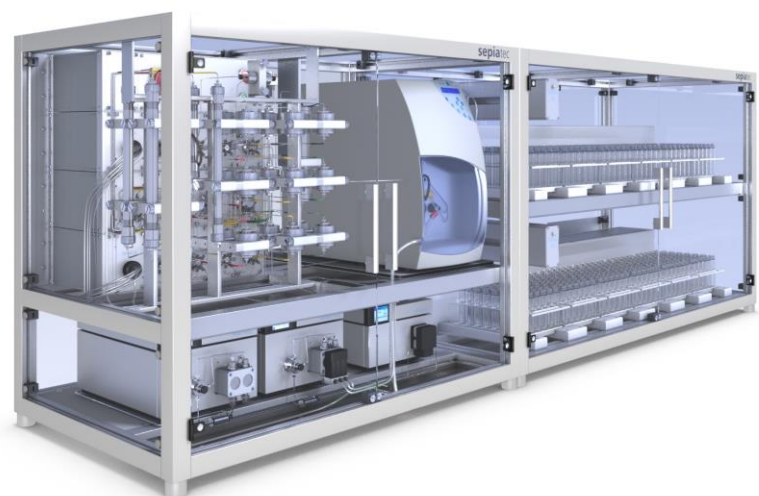
**Function:**

To determine the melting point of a substance

**Market:**

Pharma, Chemical, Academia

MELTING POINT



## PURE

## PURE Essential

## SEPIATEC

- ✓ C-805/810/815/830/835/850
- ✓ 50 Bar Flash Chromatography
- ✓ 300 Bar Prep HPLC
- ✓ Detect all compounds at once with integrated UV and ELSD
- ✓ Closed fraction collector bay

- ✓ Easy Purification Systems
- ✓ Pressure range up to 50 bar
- ✓ Speed up the separation and use less solvent

- ✓ **Significant acceleration of the purification process**
- ✓ **Supercritical Fluid Chromatography**

### Function:

For isolation or cleaning of compounds from mixtures of extracts or mixtures of synthesis

### Market:

Pharma, Chemical, Academia

# PREPARATIVE CHROMATOGRAPHY



KjelMaster K-375

K-365 KjeLine

Support

- ✓ Large color touchscreen 8.4"
- ✓ Autotitrator
- ✓ KjelSampler with 20/40 positions
- ✓ 3 pumps (NaOH, H<sub>2</sub>O, H<sub>3</sub>BO<sub>3</sub>)

- ✓ Color touchscreen 7" or LCD 4.3"
- ✓ Optional Autotitrator
- ✓ Variant 1 / 2/ 3 pumps
- ✓ MaxAccuracy, RDS & OnLevel Sensor for more accurate result

- ✓ Speed Digestion
- ✓ Block Digestion
- ✓ Scrubber
- ✓ Recirculating Chiller
- ✓ Automatic Titrator

**Function:**  
 Help the Kjeldahl (Protein) digestion and distillation process faster and safer than conventional methods

**Market:**  
 Pharma, Chemical, Food, Feed, Environmental, Academia





**Universal Extractor  
E-800**

- ✓ Heating temperature up to 150°C
- ✓ 5 in 1 extraction methods (flexible applications)
- ✓ Analyte protection sensor
- ✓ High performance condensers
- ✓ True Soxhlet system

**Fat Extractor  
E-500**

- ✓ Heating temperature up to 70°C
- ✓ Soxhlet/Randall (HE)/Twisselman (ECE)
- ✓ Analyte protection sensor
- ✓ High performance condensers
- ✓ True Soxhlet system

**Speed Extractor  
E-914/6**

- ✓ Pressurized Solvent Extraction (PSE)
- ✓ 4/6 Samples
- ✓ Extraction cell volume 10-40 mL (E-916)
- ✓ Extraction cell volume 40-120 mL (E-914)
- ✓ Low running cost

**Function:**  
Separation process consisting in the separation of a substance from a matrix

**Market:**  
Chemical, Food, Feed, Environmental, Academia





NIRFlex N-500

- ✓ Modular for Solid/Liquid/Fiber Optic/Solid Transmittance
- ✓ Get results within seconds
- ✓ Obtain several parameter simultaneously
- ✓ No need for chemical/preparation
- ✓ NIR Laboratory solutions



NIRFlex  
NIRMaster/Pro

- ✓ IP54/IP65
- ✓ Get results within seconds
- ✓ Obtain several parameter simultaneously
- ✓ No need for chemical/preparation
- ✓ NIR Laboratory/at-line solutions



NIR Proximate

- ✓ IP69
- ✓ Down/Up View
- ✓ AutoCal
- ✓ Get results within seconds
- ✓ Obtain several parameter simultaneously
- ✓ No need for chemical/preparation
- ✓ NIR Laboratory/at-line solutions

### Function:

Fast analysis without destroying the sample and without preparation for several parameters at one time

### Market:

Pharma, Chemical, Food, Feed, Academia

# NIR SOLUTIONS



NIR-Online Process Analyzer



NIR-Online Multipoint System

- ✓ Ultra high speed spectrometer
- ✓ Hardware process integration
- ✓ AutoCal
- ✓ Integration to process control systems

- ✓ Up to 10 sensors
- ✓ Ultra high speed spectrometer
- ✓ Hardware process integration
- ✓ AutoCal
- ✓ Integration to process control systems

**Function:**

Fast analysis without destroying samples in real-time for multiple parameters in the production line

**Market:**

Pharma, Chemical, Food, Feed





## PT. BUCHI Indonesia

ESA 8 Building, 5<sup>th</sup> Floor, Suite 1-3  
Jl. Ir. Soekarno Kav. 3-5  
Paramount – Gading Serpong  
Tangerang 15332

[saputra.d@buchi.com](mailto:saputra.d@buchi.com)

